

# The labour market in the European inland waterway transport sector

**Norbert Kriedel (CCNR)**

Administrator for Statistics and Market Observation

**Laure Roux (CCNR)**

Administrator for Economic Affairs

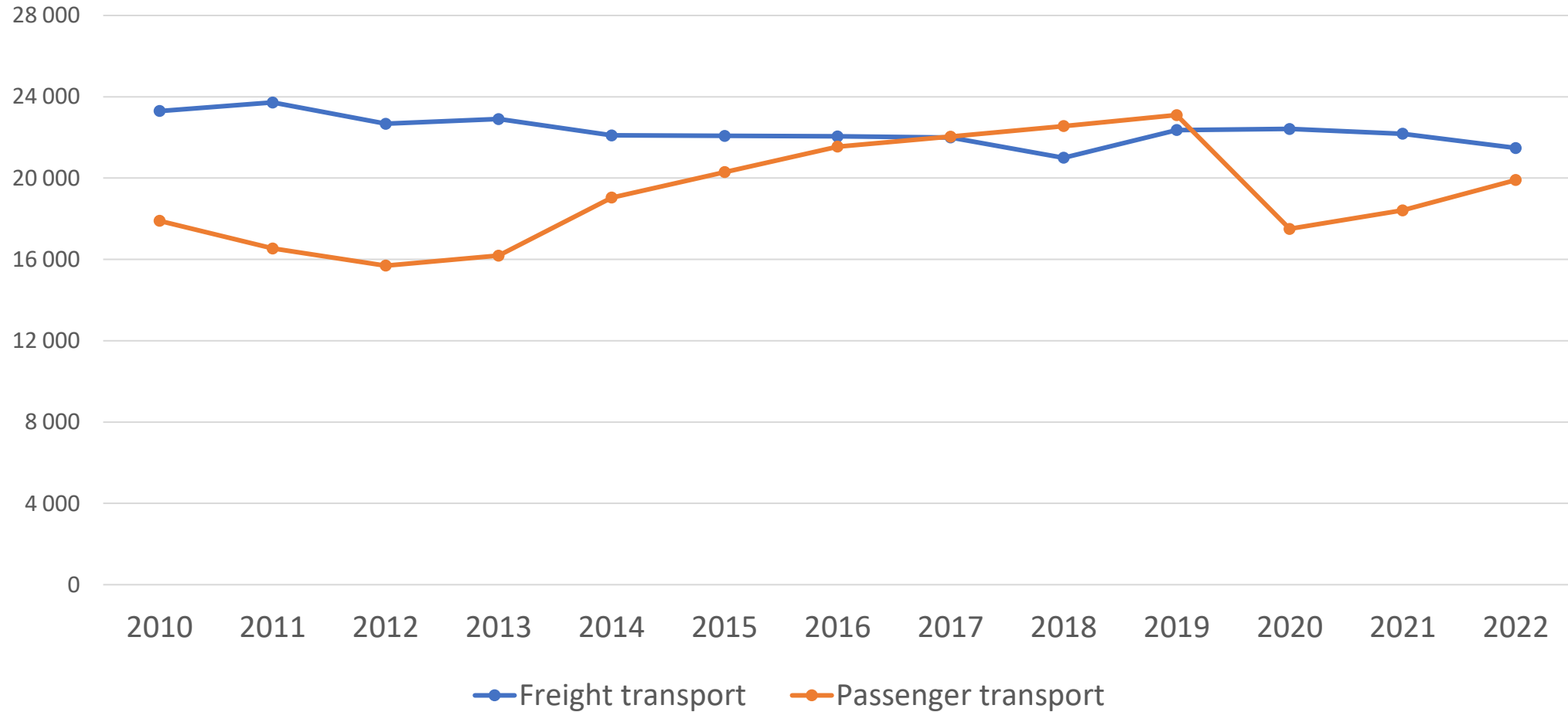


# 01

## Overview about EU IWT labour market

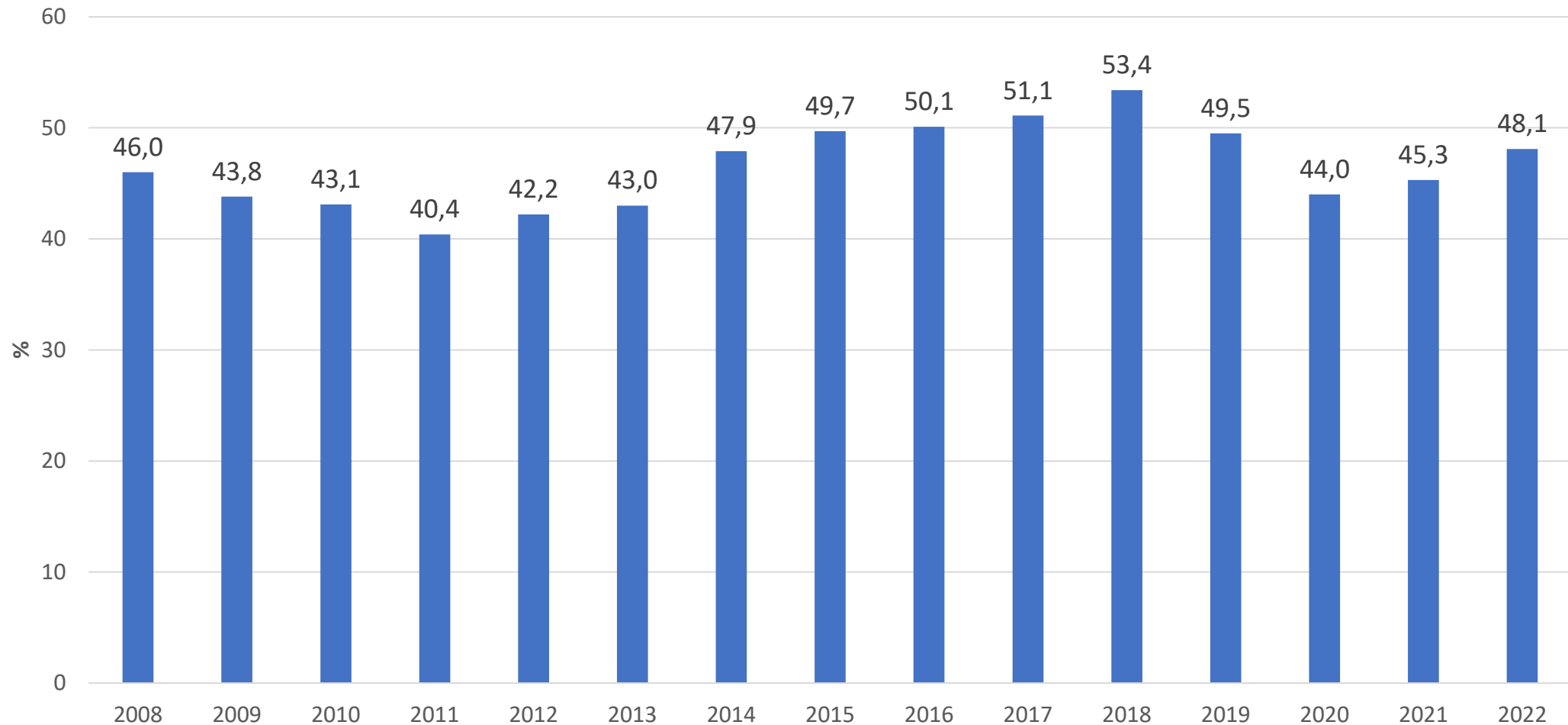


## Development of employment in freight and passenger transport in the inland waterway transport sector in Europe



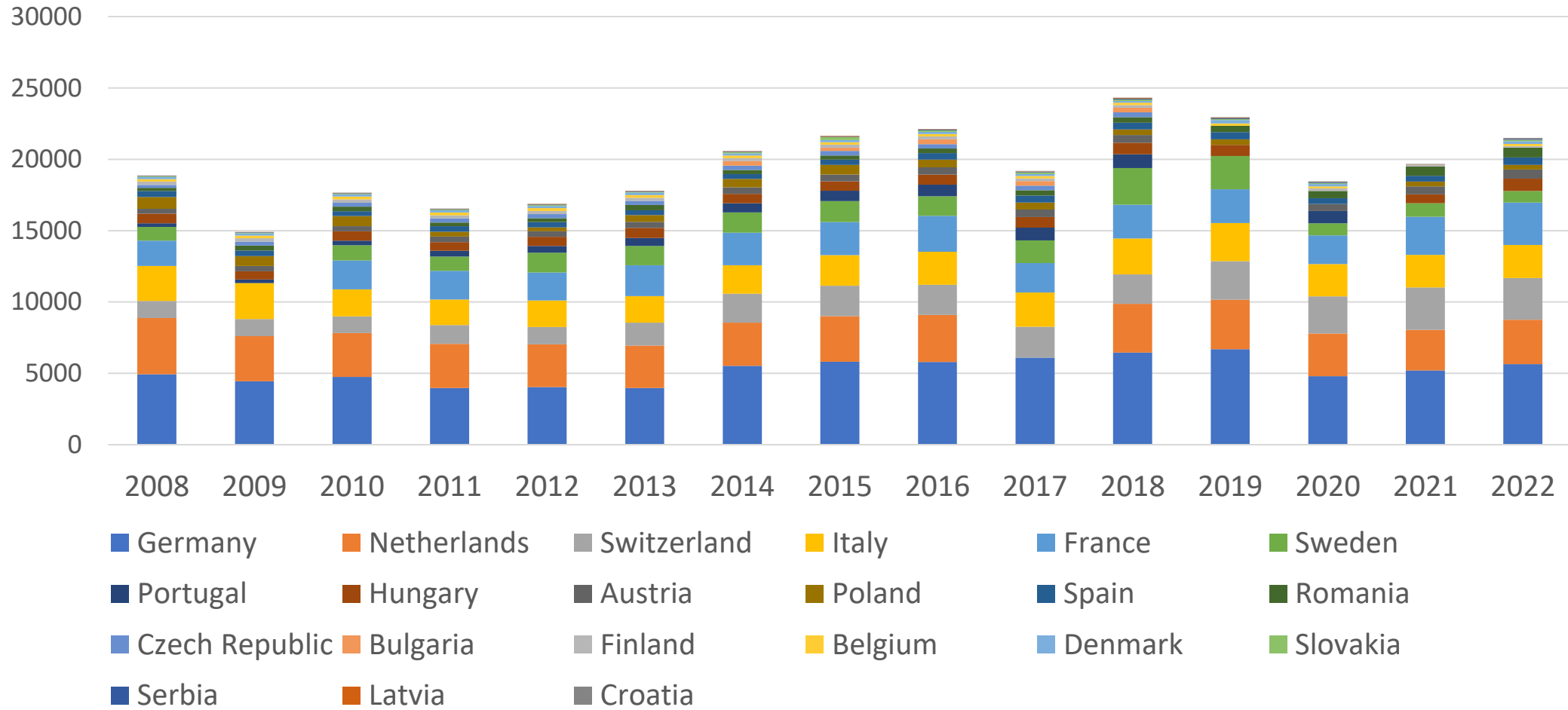


## Development of the share of passenger transport within total IWT employment in the EU (%)



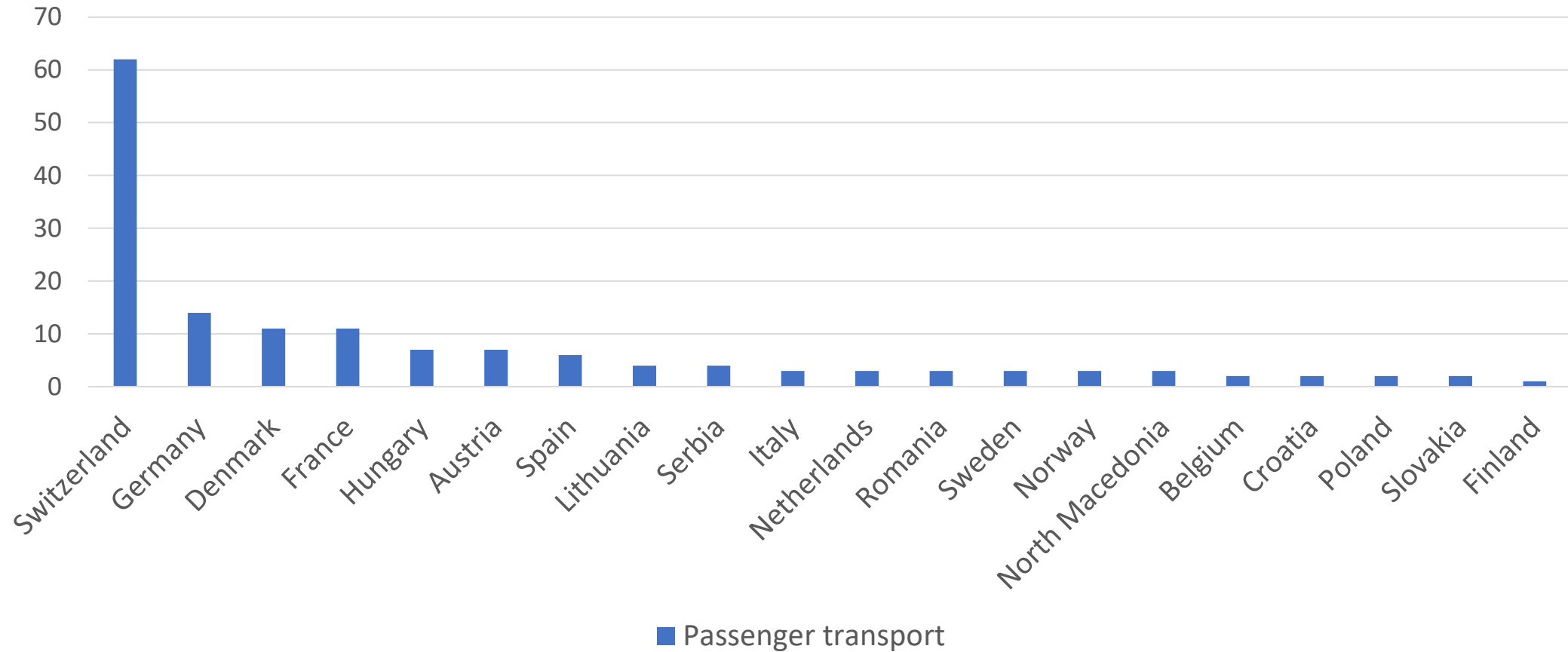


## Number of persons employed in IWW passenger transport in Europe





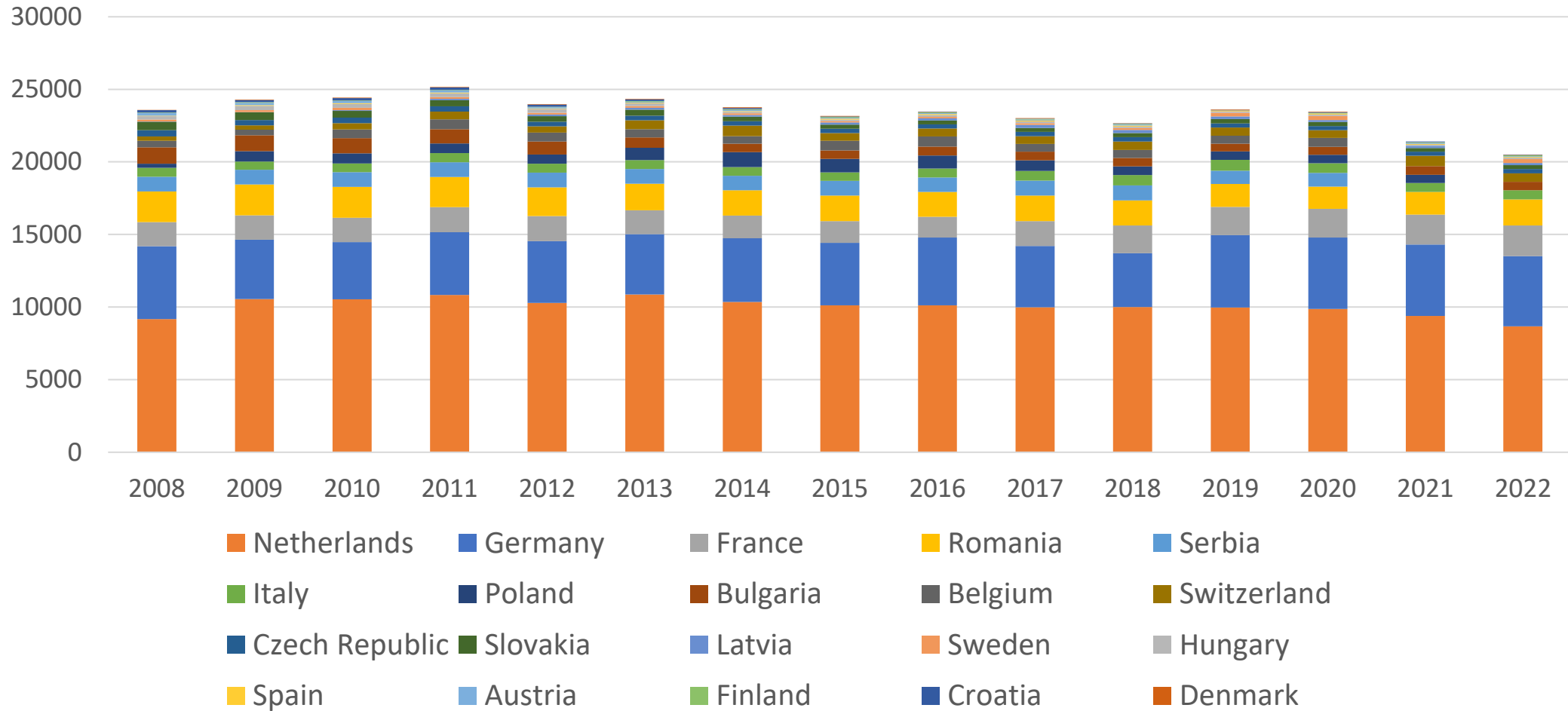
## Number of persons employed per company per country in IWW passenger transport in 2022



The high value for Switzerland is due to the presence of many river cruise companies registered in the country.

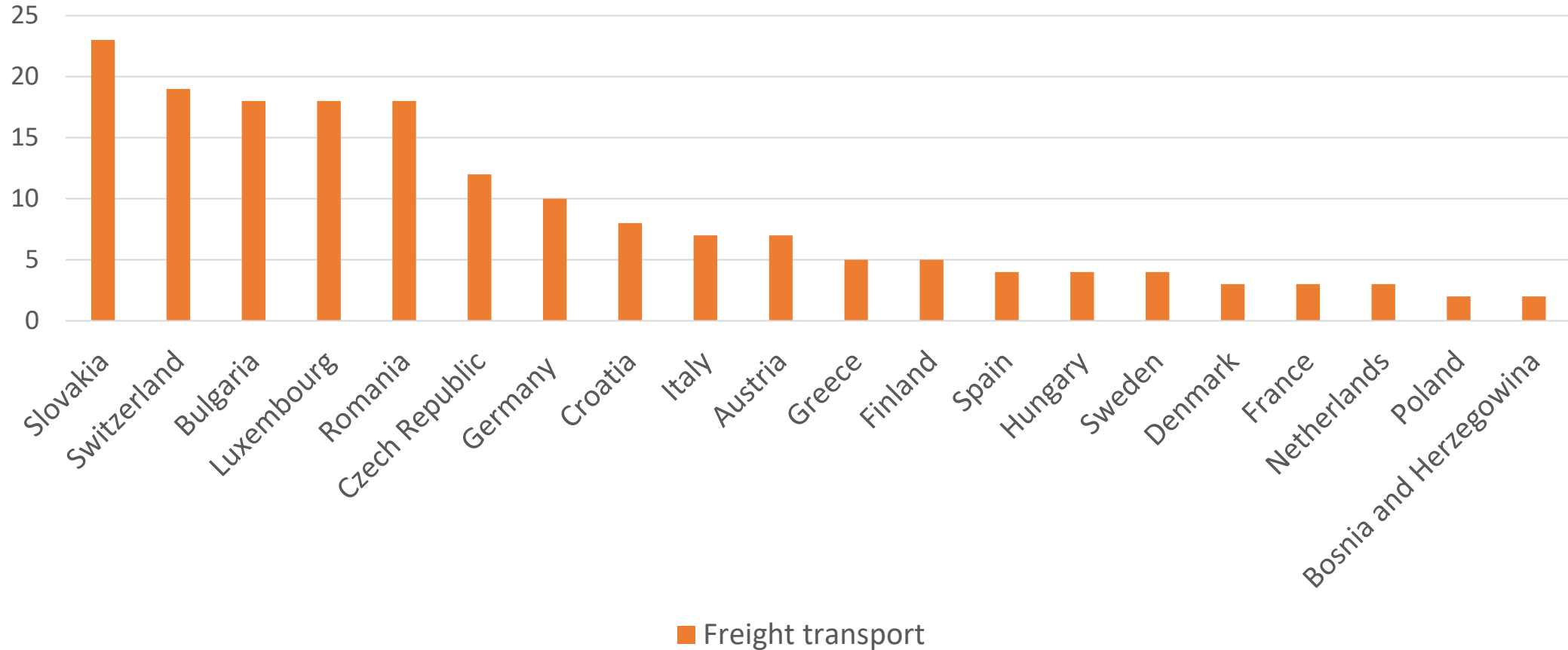


## Number of persons employed in IWW freight transport in Europe





## Number of persons employed per company per country in IWW freight transport in 2022

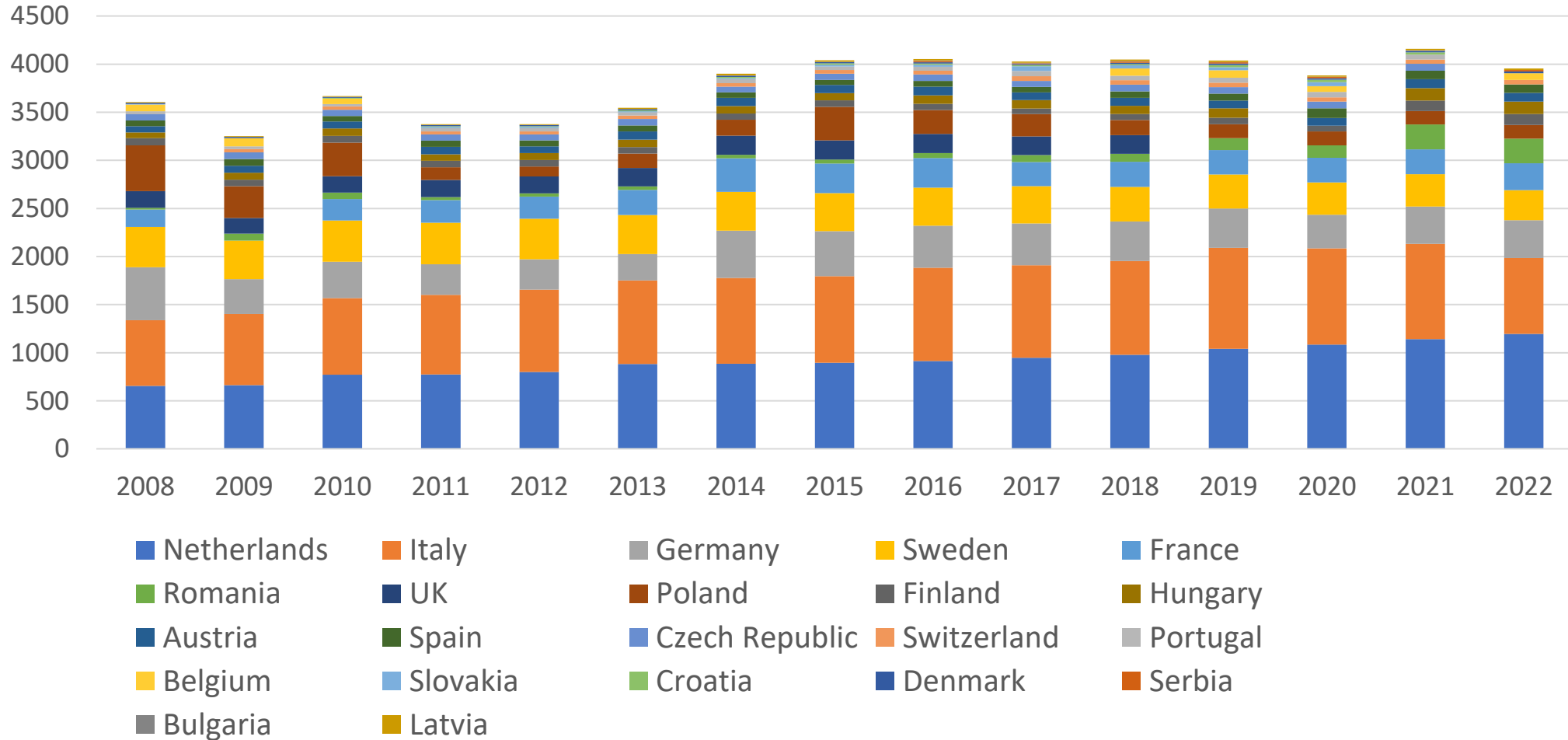


**In general, eastern European countries have higher values for the number of employed persons per company than western European countries.**



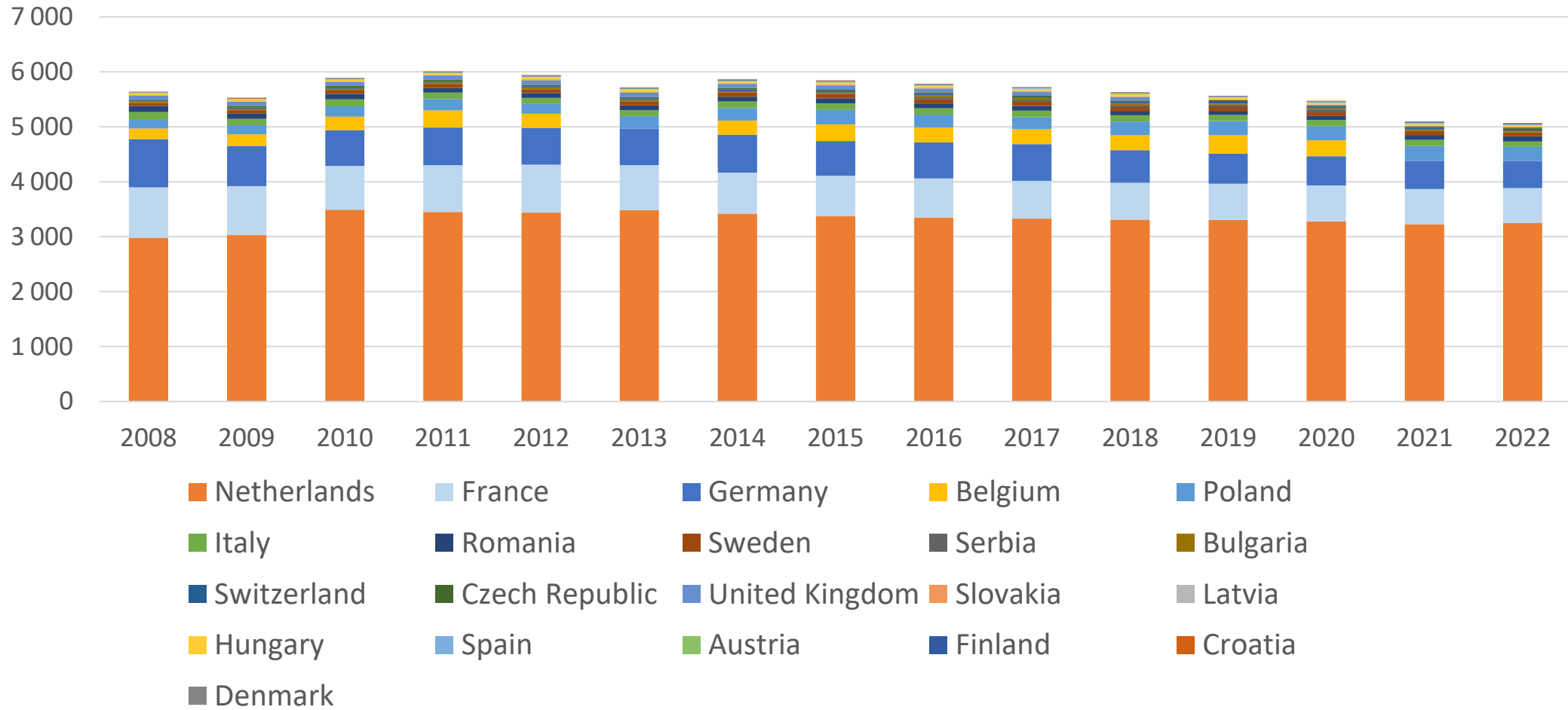


## Number of IWW passenger transport companies in Europe





## Number of IWW freight transport companies in Europe



02

# Main trends and country examples



## Main trends affecting IWT labour market in recent years

**Staff shortage**

**Ageing of the workforce**

**Migration – East/West**

- **Detailed data available about the German and Belgian labour markets**
- **They can be used as example to confirm such trends**

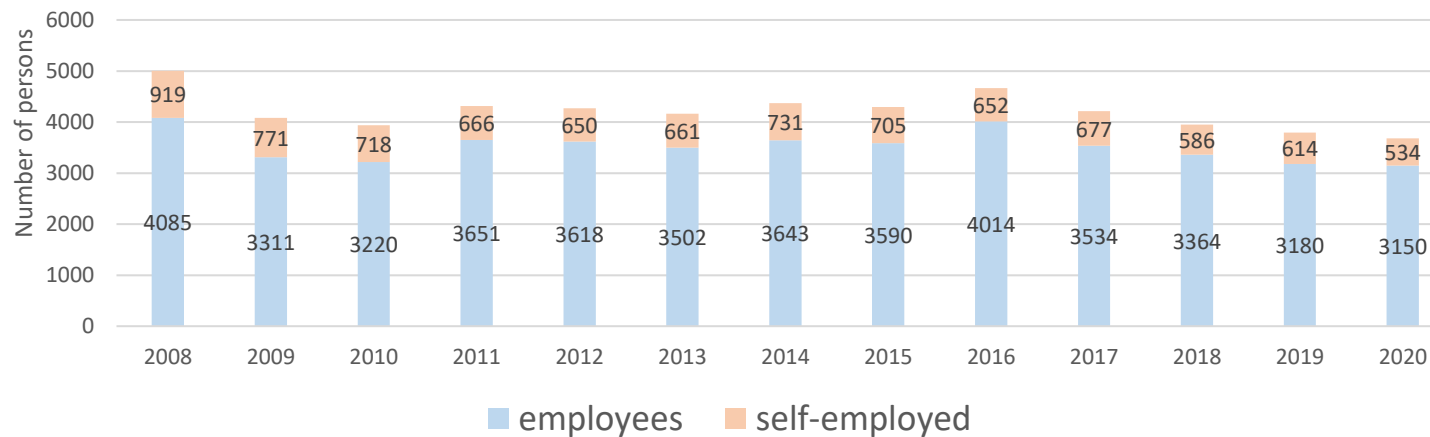
# The German IWT labour market

An example of the migration  
and ageing trends

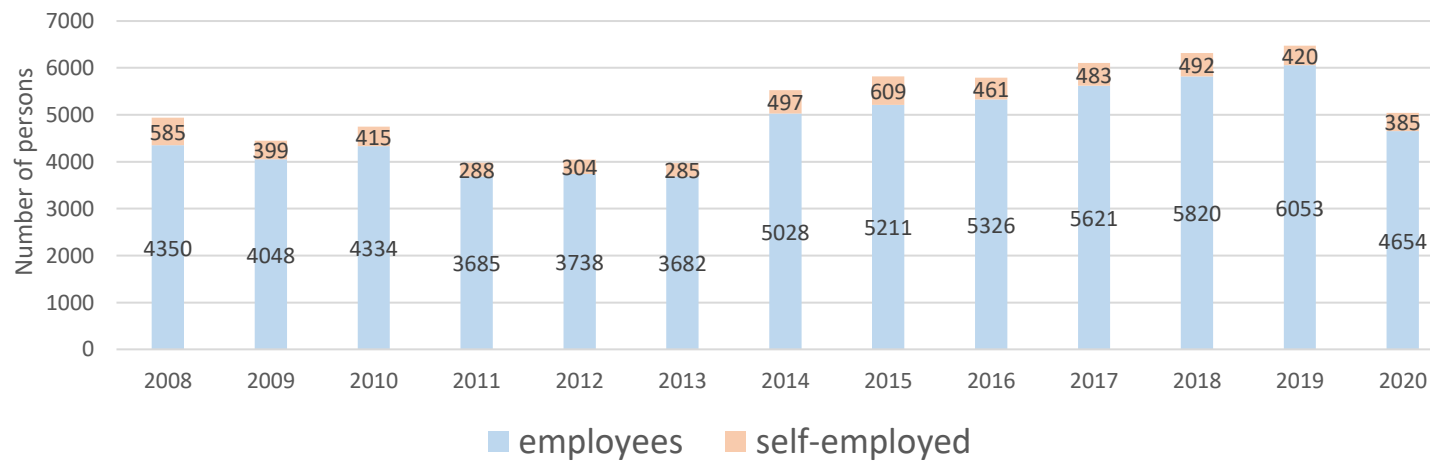


## Total employment in Germany

Employment in IWW freight transport

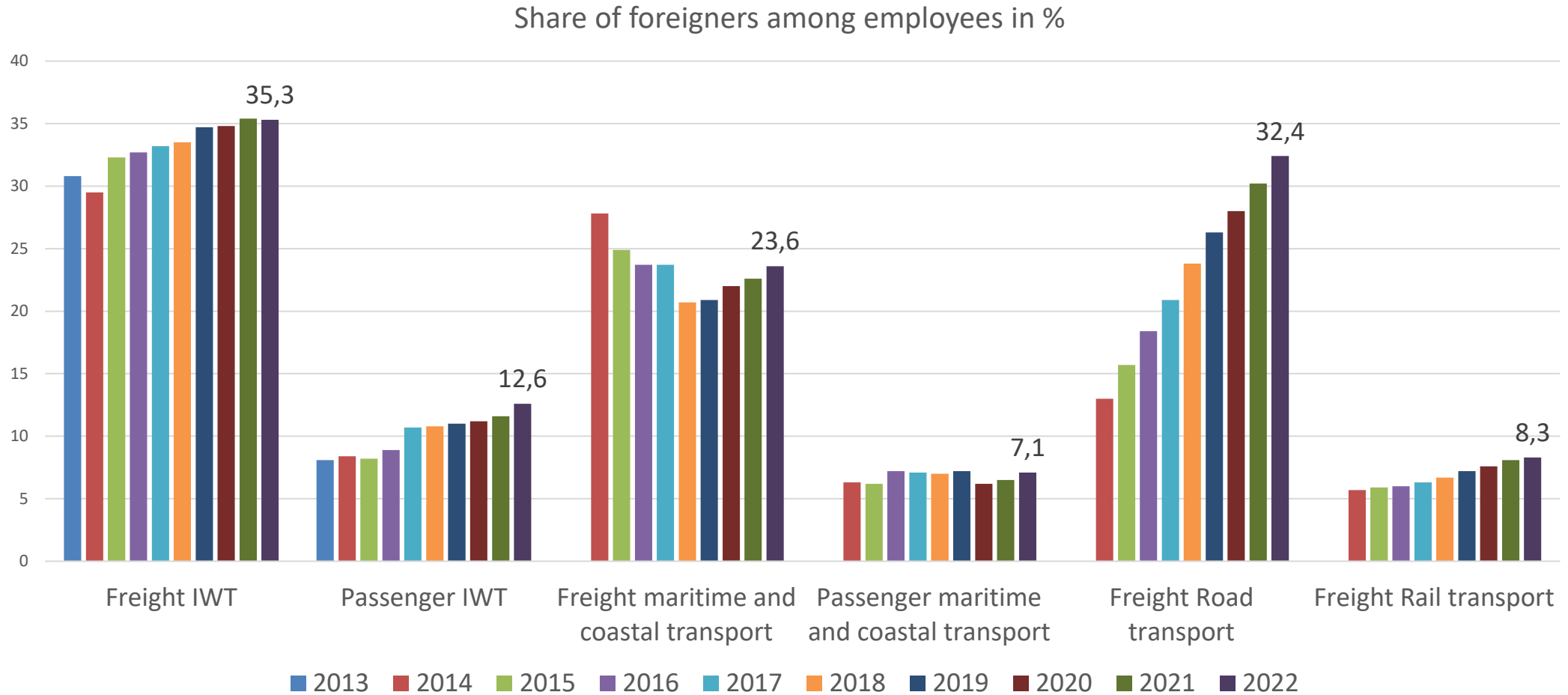


Employment in IWW passenger transport



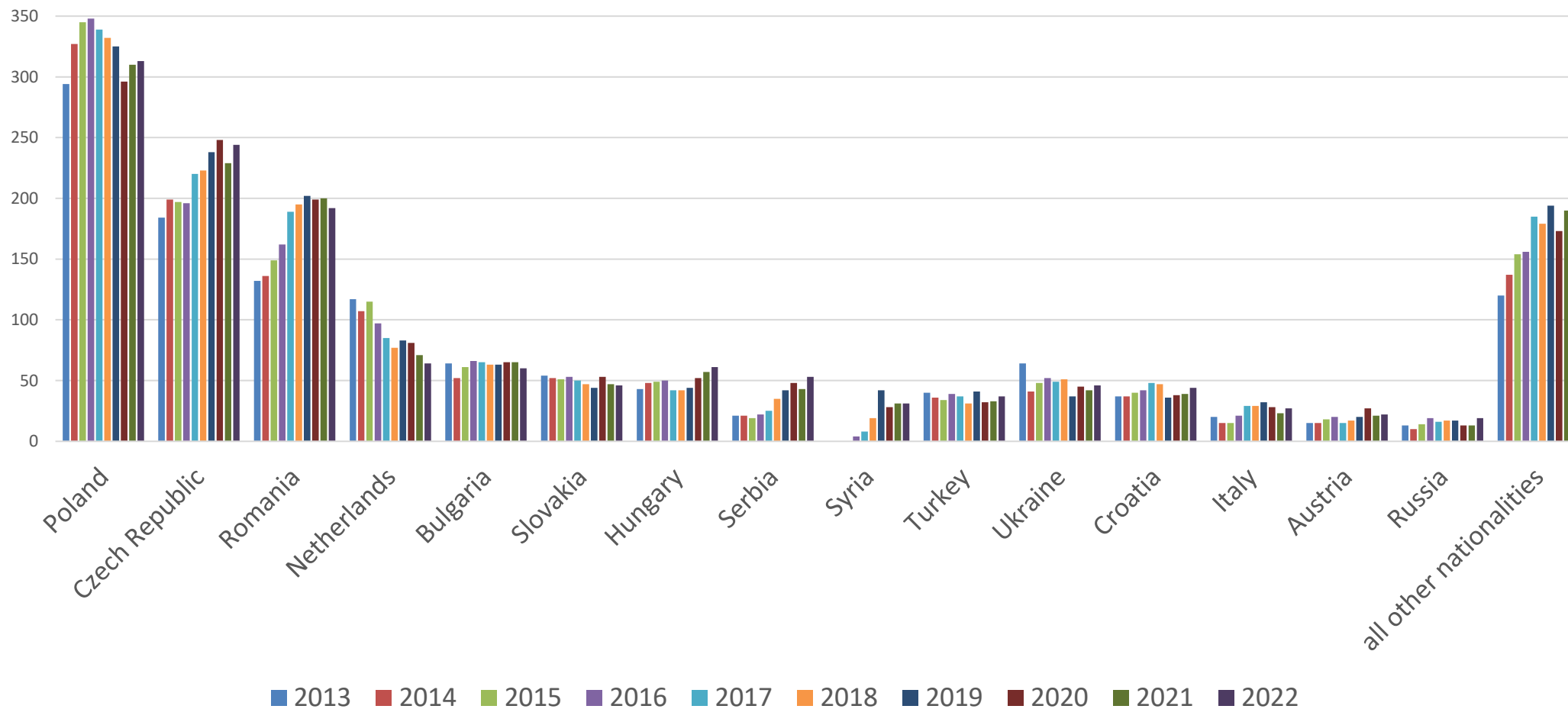


## Freight IWT has the highest share of foreigners in the German transport sector





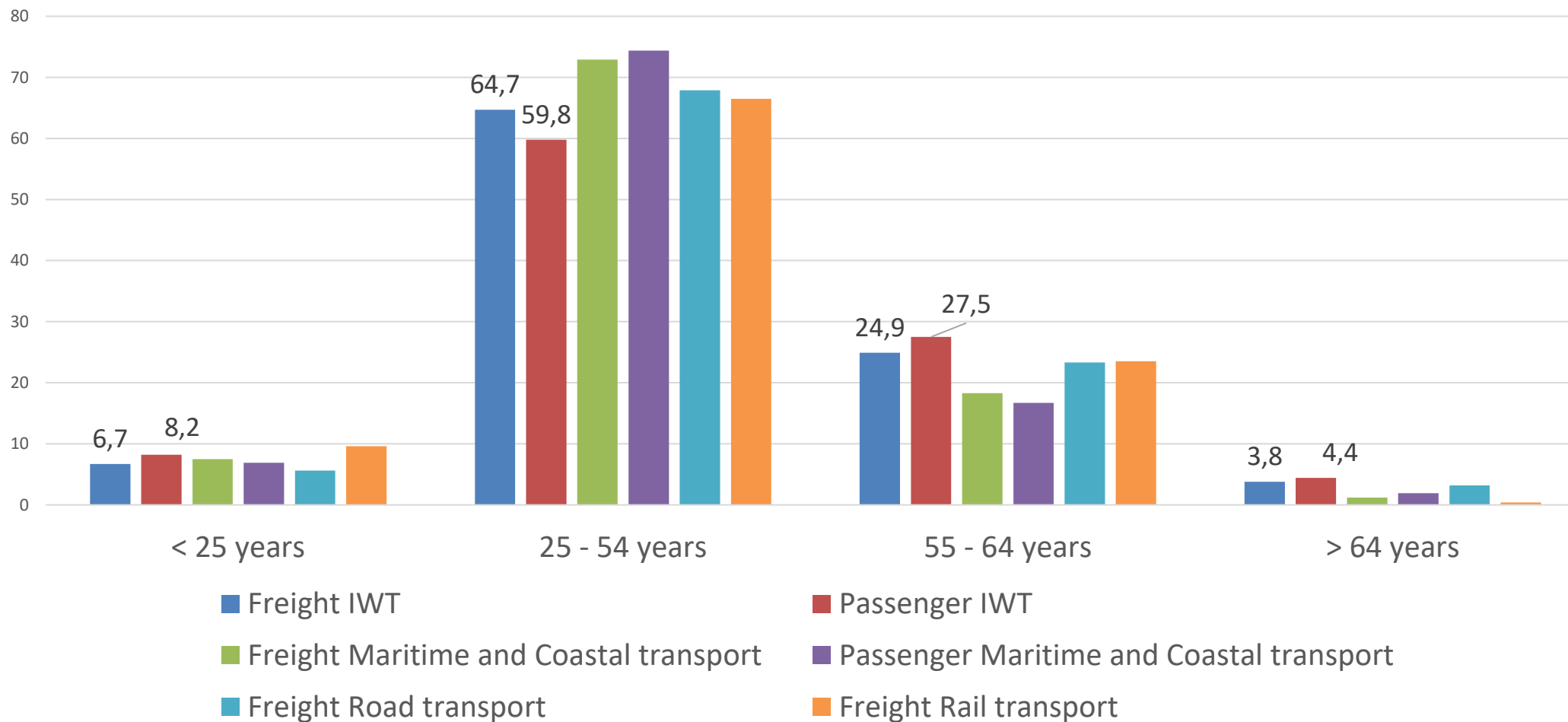
## Absolute number of foreigners in the German IWT sector





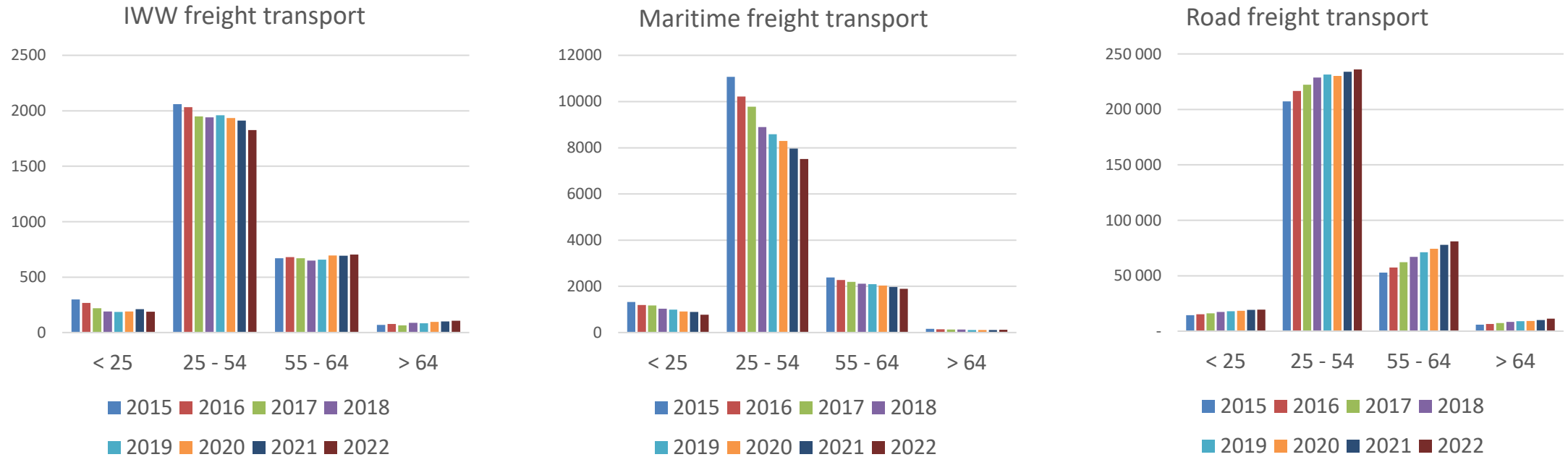


## Share of age groups in the German transport sector – Employees (%)





## Employment by age group over time in freight transport – Employees



**In IWW freight transport, the numbers for the two younger age groups decreased between 2015 and 2022, while the numbers for the two older age groups increased.**

**The maritime freight transport shows decreasing numbers for all age groups.**

**The road transport sector shows increasing numbers for all age groups.**

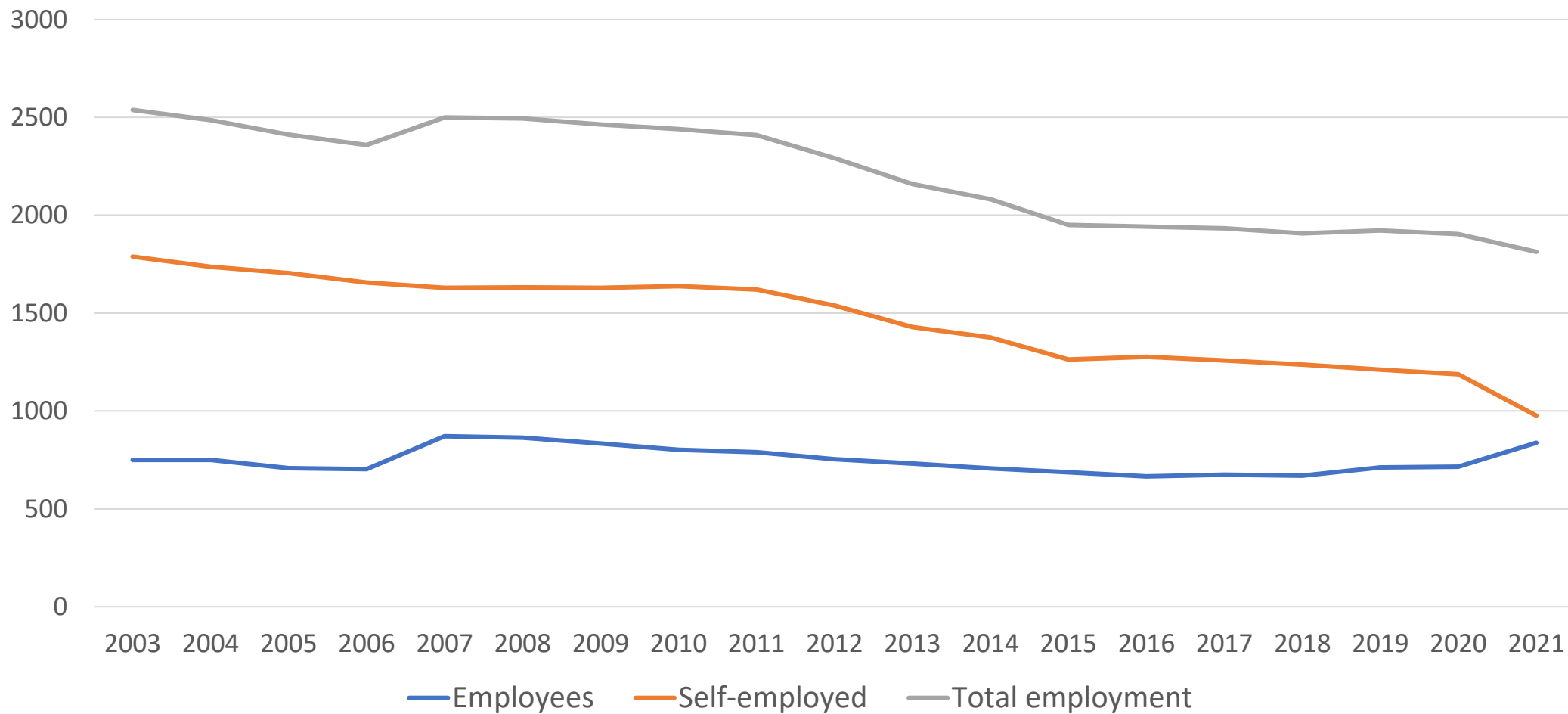
Source: CCNR analysis based on data from Federal Employment Agency

# The Belgian IWT labour market

An example of the staff shortage  
and ageing trends

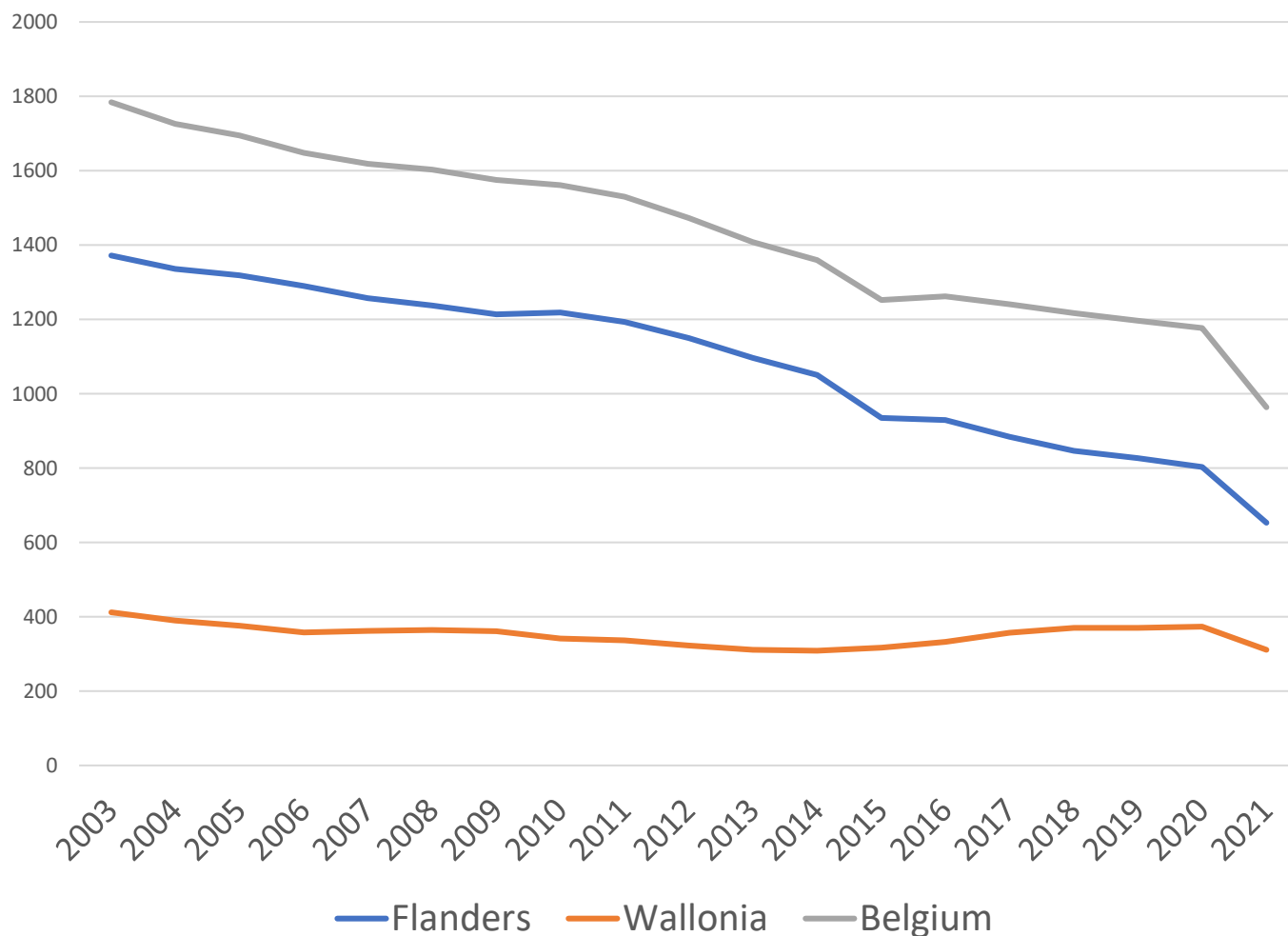


## Employment in the Belgian inland waterway sector – Absolute numbers





## Number of self-employed barge owners in the Belgian inland waterway sector – Absolute numbers



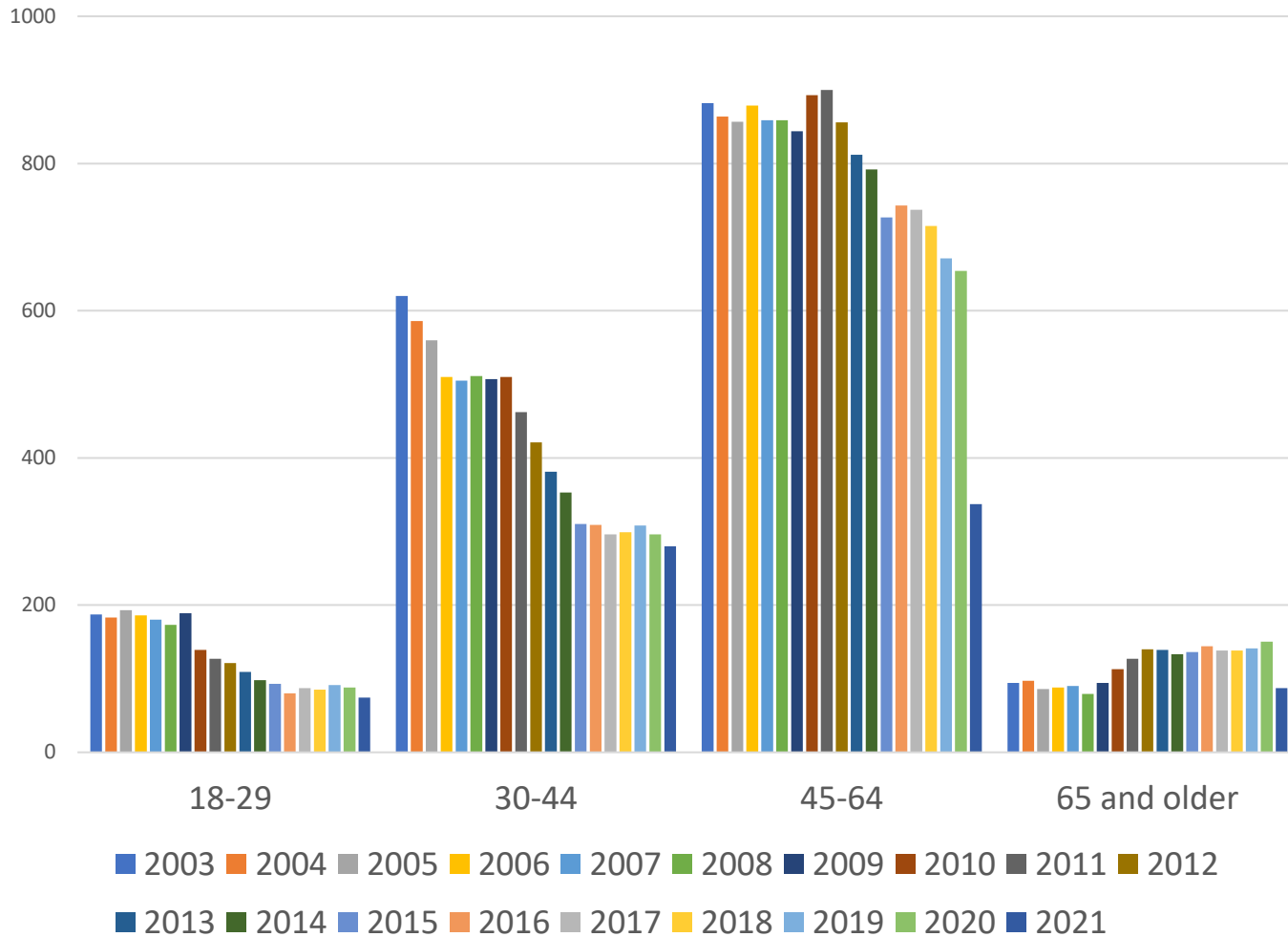
**Decreasing trend in Belgium overall, due to decrease in Flanders.**

**The development in Wallonia followed a more positive trend compared to Flanders.**

**The sharp decline in 2021 is provoked by a change of methodology and not related to any content related factor. Company directors were not counted anymore as self-employed from 2021 onwards.**



## Number of self-employed barge owners in the Belgian inland waterway sector – By age group



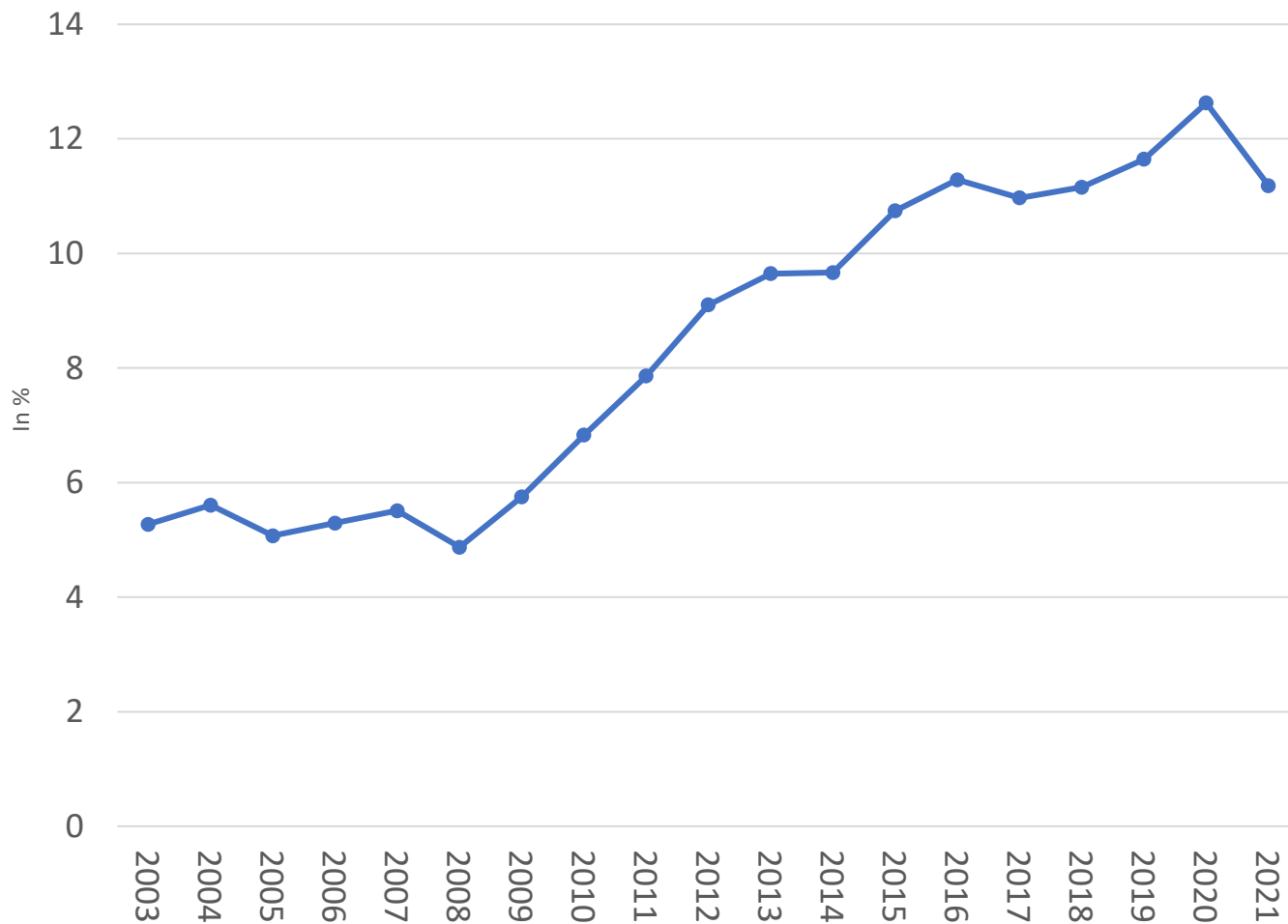
Decrease for nearly all age groups over time.

The oldest age group does not show a decrease.

Therefore, the average age in the group of the self-employed increased.



## Share of persons aged 65 and more within the self-employed barge owners in the Belgian inland waterway sector (%)

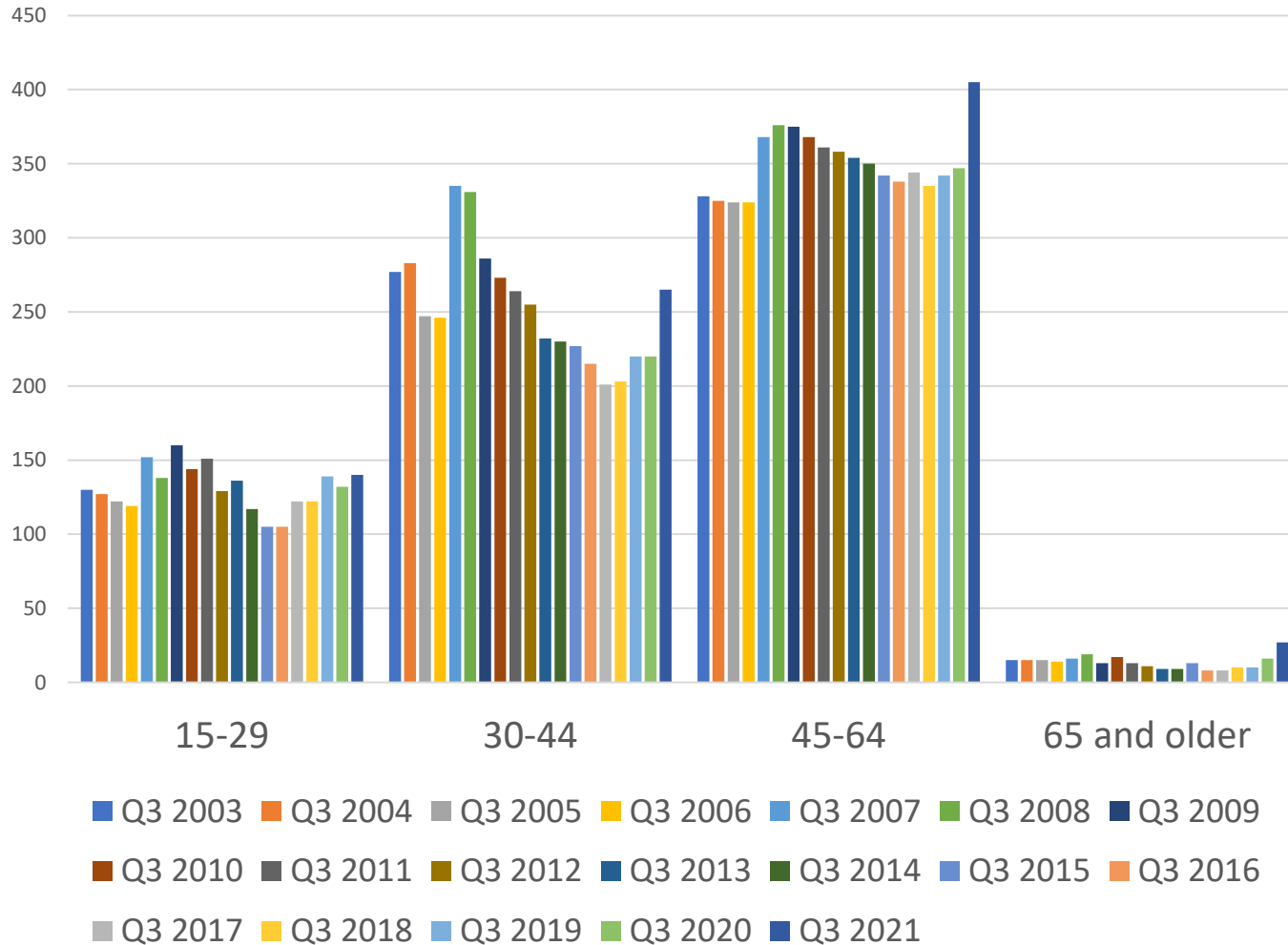


Increase from 4.9 % in 2008 up to 12.6 % in 2020.

The slight decrease in 2021 is due to methodological changes. From 2021 onwards, company directors were not counted anymore as self-employed.



## Number of employees in the Belgian inland waterway sector – By age group



Following a decreasing trend, the number of employees stabilized in recent years.

The sharp increase in 2021 is due to a change in methodology.

Workers active in loading and unloading are counted from this year onwards.





THANK YOU FOR YOUR ATTENTION!

Norbert Kriedel  
[n.kriedel@ccr-zkr.org](mailto:n.kriedel@ccr-zkr.org)  
Tel: +33 3 88 52 46 71